



DYNAMICS

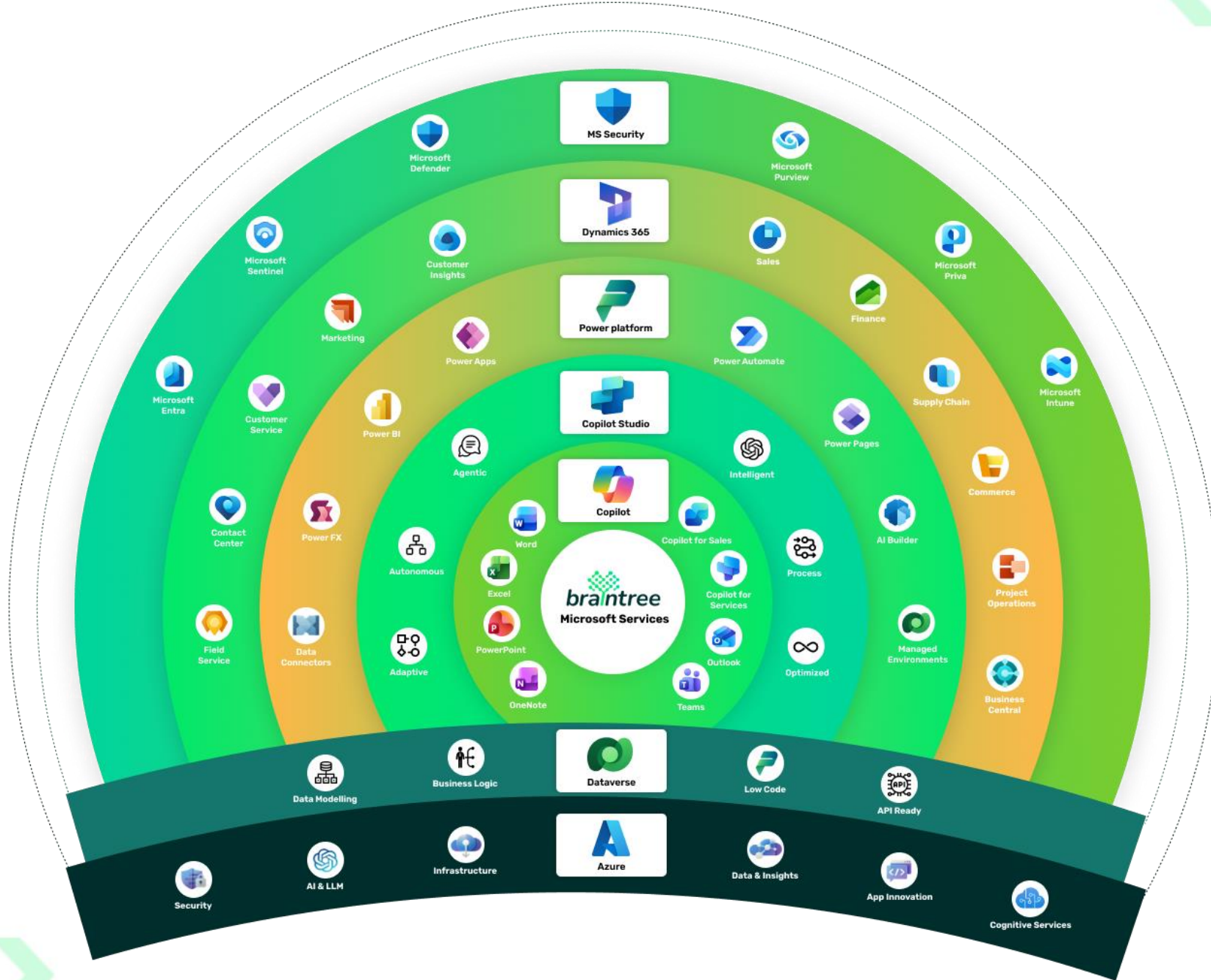
»» **IN MOTION** «« 365

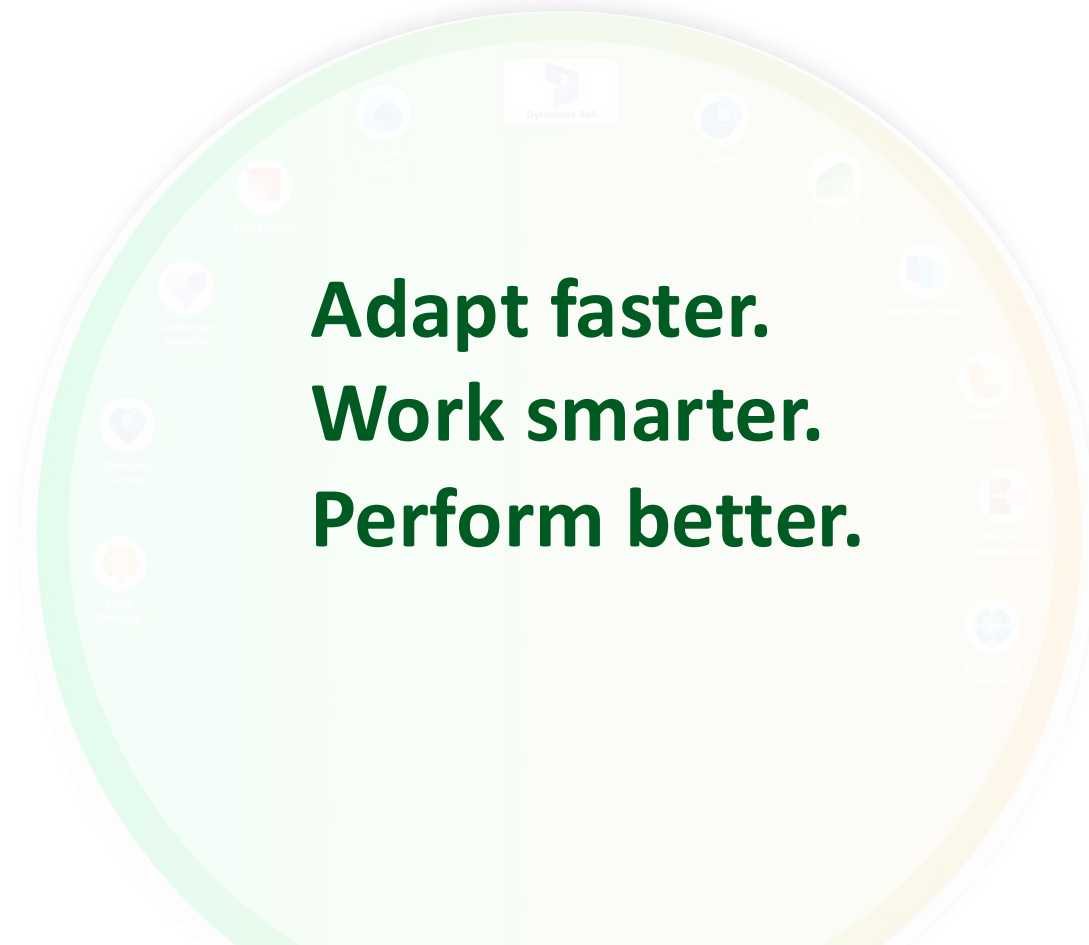
The Matumi Success Drive

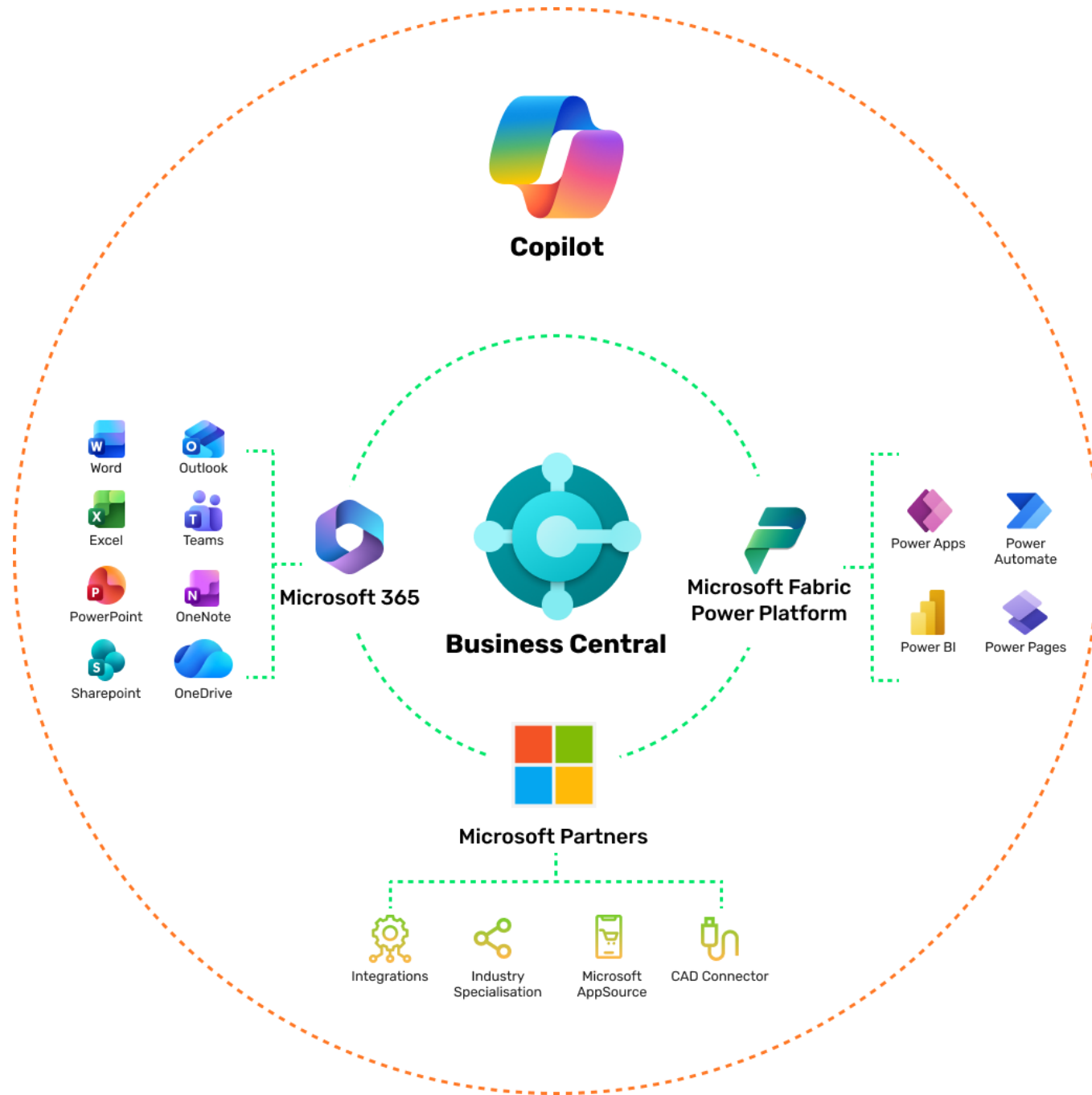
Powered by Microsoft Dynamics 365 and Braintree.



Dynamics 365









Finance and Accounting

- General Ledger
- Unlimited Dimensions
- Multiple currencies
- Multiple companies
- Budgets
- Financial reporting
- Consolidation
- Intercompany postings
- Statistical accounts
- Cash flow forecasts
- Fixed assets
- Cost accounting
- Deferrals
- Electronic payments/direct debits
- Customer payment process
- Late payment prediction
- Bank account reconciliation
- Bank account management
- Check writing

Sales and marketing

- Marketing text suggestions
- Contact management
- Campaign management
- Interaction and email logging
- Opportunity management
- Dynamics 365 Sales integration

Fulfilment and delivery

- Sales invoicing
- Sales order management
- Sales line and invoice discounting
- Campaign pricing
- Returns and exchanges
- Dynamics 365 Customer Service integration

Purchasing and payables

- Purchase invoicing
- Purchase order management
- Purchase return order management
- Alternative order addresses
- Purchase invoice discounts

Inventory

- Inventory control
- Item categories and attributes
- Item tracking
- Multiple locations
- Location transfers

Supply planning and availability

- Supply planning
- Demand forecasting
- Sales and inventory forecasting
- Order promising
- Calendars

Project management

- Basic resources
- Capacity management
- Multiple costs
- Projects
- Time sheets

Service management

- Planning and dispatching
- Service contract management
- Service item management
- Service order management
- Service price management
- Dynamics 365 Field Service integration

Warehouse management

- Bin Tracking
- Inventory picks and put-aways
- Warehouse receipt
- Warehouse shipment

Manufacturing*

- Assembly management
- Standard cost worksheet
- Production bill of materials
- Basic capacity planning
- Machine centers
- Version management





... with benefits **ONLY** Microsoft can provide

- ✓✓ **Cloud-based** with remote access across mobile devices
- ✓✓ **Deep functionality** with built-in best practices that improve processes across the business
- ✓✓ **Open architecture** easily connects with existing systems
- ✓✓ **Highly customizable** to meet industry or vertical needs with pre-built apps
- ✓✓ **Robust, flexible reporting and analysis** to drive business performance and improve decision-making
- ✓✓ **Rapid to deploy and easy to use** so you can realize business value quickly

- ✓✓ **Microsoft 365 applications** work natively with Business Central, boosting productivity and improving collaboration
- ✓✓ **Microsoft Copilot** leads in AI innovation so your business can adapt faster, work smarter, and perform better
- ✓✓ **Microsoft delivers world-class security, performance and scale** to support your business now and as it grows





MATUMI FRESH GROUP

— EST 1995 —

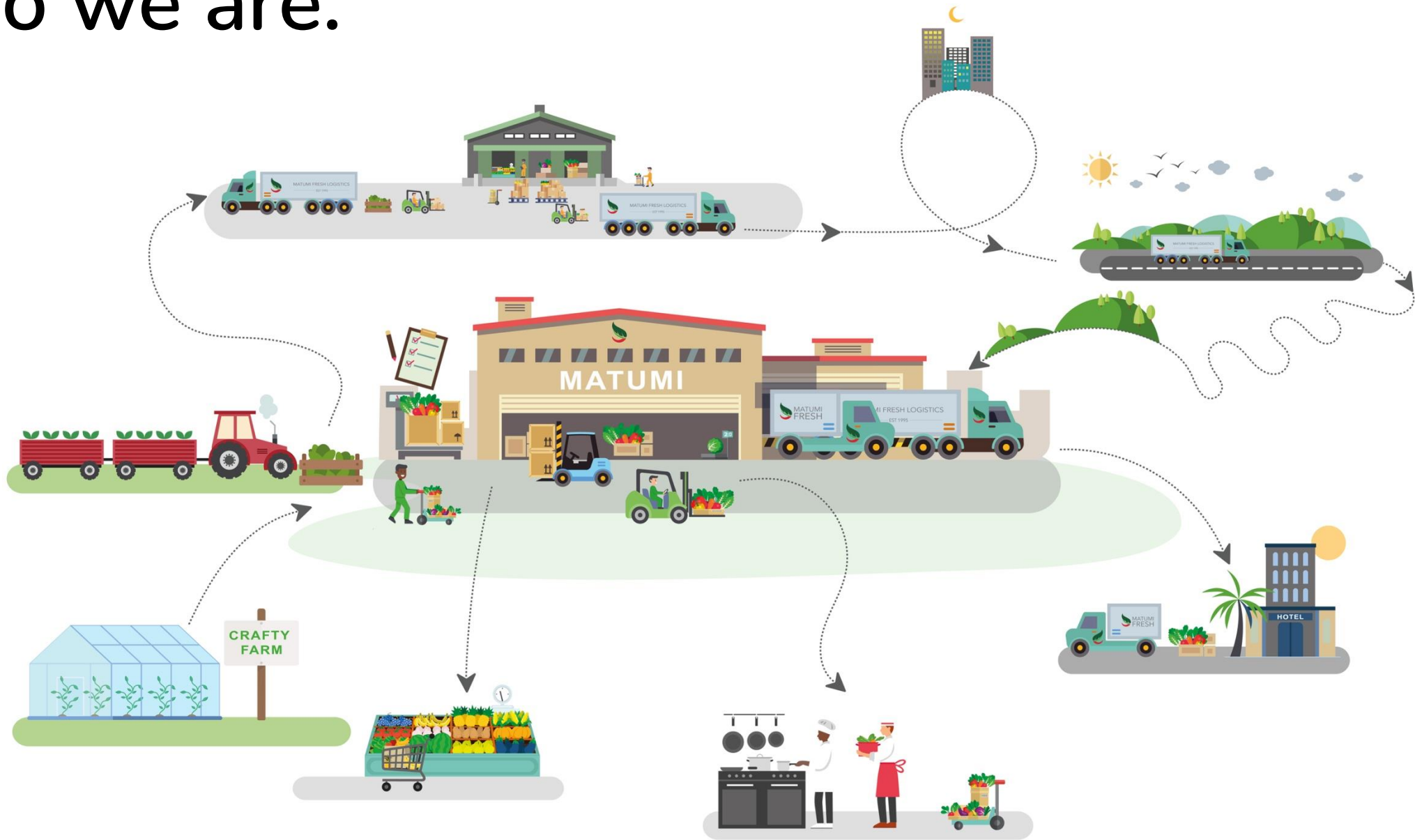




Nicholas Wood



Who we are.



The World Before Microsoft







Deployment of Business Central

- Launch completed within 4 months.
- Dedicated effort and long hours.
- Dependable and patient Brain Tree team.
- Stayed within budget.
- Delivered on schedule.

DONT turn Business Central into a replica of your previous system!



What we got from BC



- Inventory Financial Management: Improved by 1,788%.
- Return on Investment: 152% by month four.
- Reporting Efficiency:
 - Report generation time reduced by 75%.
 - Month-end reporting cut from 6–7 days to 1.5 days.
- GP stabilization





| Accessibility & Flexibility



A little look into Copilot.

The screenshot displays the Microsoft Dynamics 365 Business Central interface for a user named Nicholas Wood. The interface is personalized with a green header and a navigation menu. The main content area features a personalized greeting, a list of actions, and several key performance indicator (KPI) cards. The KPI cards are organized into sections: Sales This Month, Ongoing Sales, Ongoing Purchases, Payments, Incoming Documents, Data Integration, User Tasks, Job Queue Tasks, Email Status, and Approvals. The Windows taskbar is visible at the bottom, showing the system tray with weather, search, and system icons.

Business Central - Dynamics 365 Business Central - Sandbox (MFP)

Dynamics 365 Business Central

Matumi Fresh Produce | Finance | Cash Management | Sales | Purchasing | All Reports

Customers | Vendors | Items | Bank Accounts | Chart of Accounts | Fixed Assets | Trial Balance | Payment Recon...tion Journals | General Journals | VAT Statements | Custom Report Layouts | More

Headline

Good afternoon, Nicholas Wood!

Actions

- + Sales Quote
- + Sales Order
- + Sales Invoice
- + Purchase Quote
- + Purchase Order
- + Purchase Invoice
- > Find entries...
- > New
- > Payments
- > Reports
- Excel Reports
- Power BI Reports

Activities

Sales This Month	Overdue Sales Invoice Amount	Overdue Purch. Invoice Amount	Sales Invoices Predicted Overdue
R3,151,046	R185,226	R1,410,526	196

Ongoing Sales

Sales Quotes	Sales Orders	Completely Re... from Stock	Sales Invoices
0	41	0	0

Ongoing Purchases

Purchase Orders	Ongoing Purch... Invoices	Purch. Invoices... Next Week
56	2	186

Payments

Unprocessed Payments	Average Collec... Days	Outstanding V... Invoices
0	20.8	486

Scan documents

Create incomin... from Camera

Incoming Documents

My Incoming Documents
0

Data Integration

Integration Errors
0

User Tasks

My User Tasks
Pending User Tasks: 0

Job Queue Tasks

Job Queue Tasks		
Tasks Failed: 0	Tasks In Process: 0	Tasks In Queue: 0

Email Status

Email Activities		
Failed Emails in Outbox: 0	Draft Emails in Outbox: 14	Sent Emails Last 30 Days: 999+

Approvals

Pending Approvals	
Requests Sent ... Approval: 0	Requests to Approve: 1

21°C Cloudy

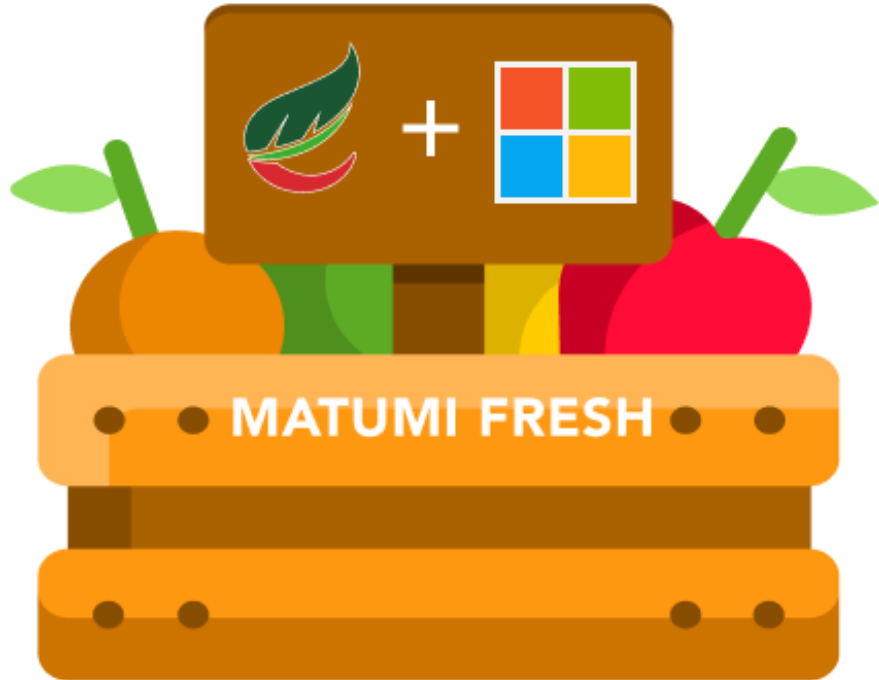
Search

ENG US

14:29 2025/11/28



Future for Matumi and Microsoft



- Order processing is managed by clients using Power Apps.
- Integration with CTRL allows for real-time invoicing as trucks are unloaded.
- Inventory forecasting with AGR.



Thank you





Fireside Chat Featuring the Braintree Implementation team and Nick from Matumi

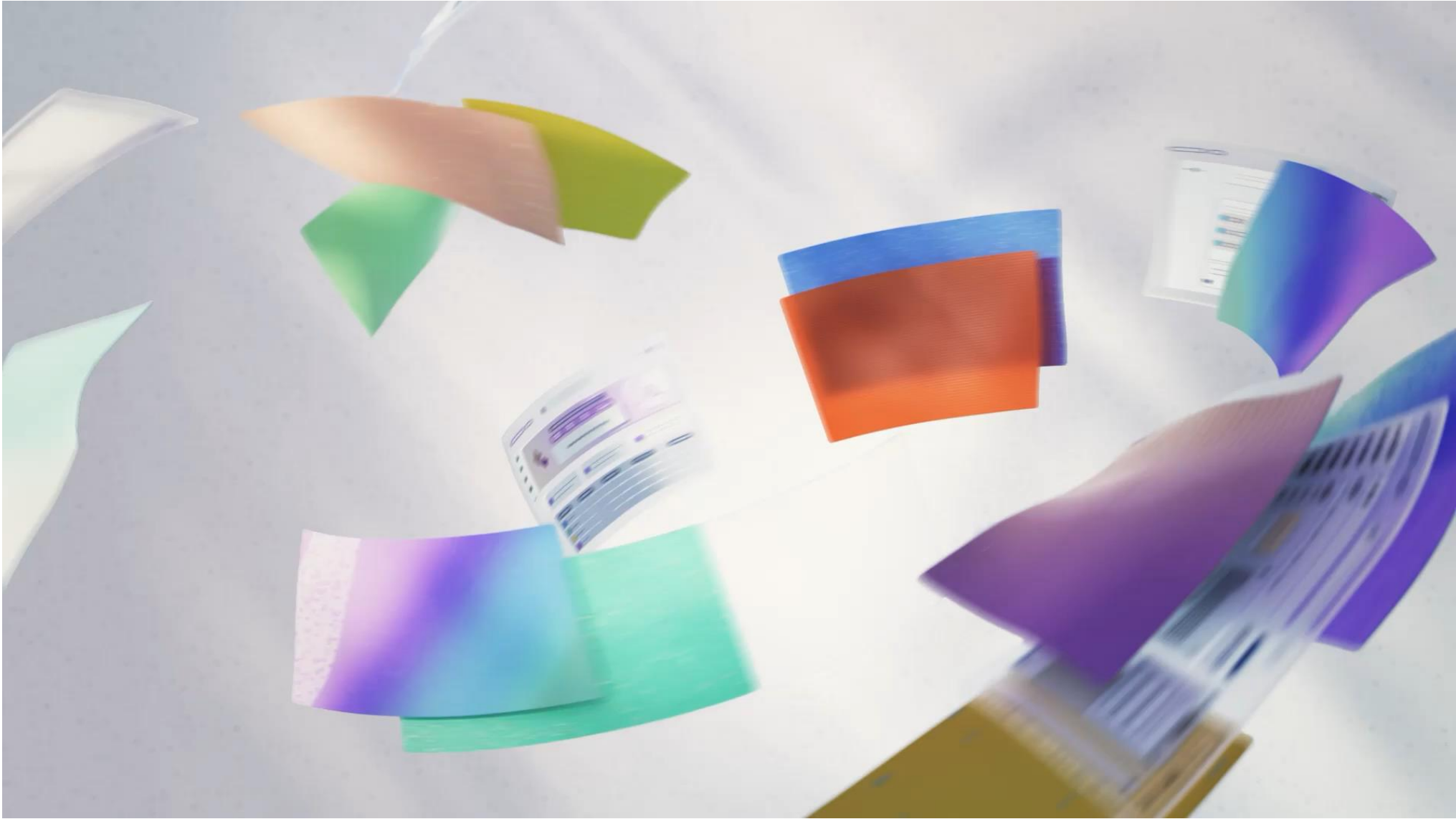




Dynamics 365


The Next Wave







Why AI Jumpstart

WHO ARE WE? 	CEOs 
WHAT DO WE WANT? 	AI! 
AI TO DO WHAT? 	WE DON'T KNOW! 
WHEN DO WE WANT IT? 	RIGHT NOW! 

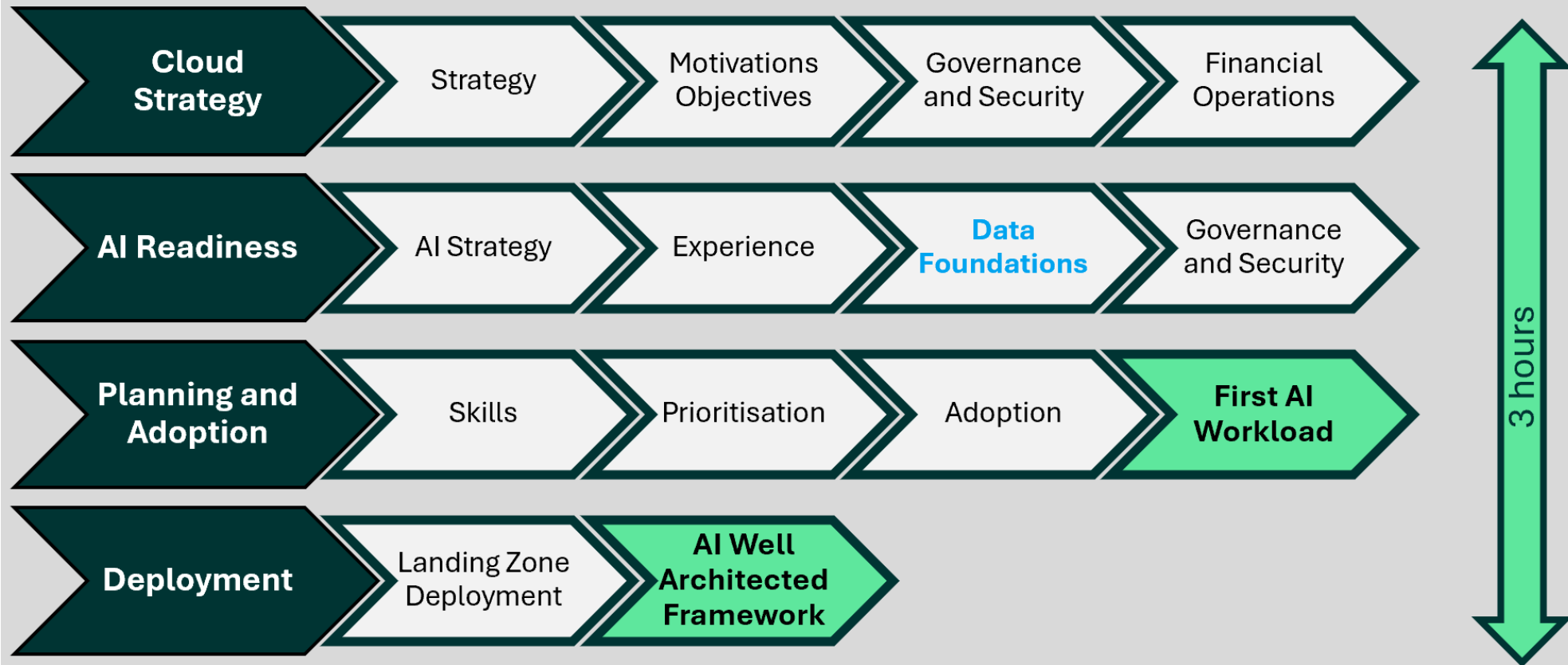
- Tailored Strategy That Aligns to Business Goals
- Strategic Guidance and Partnership
- Microsoft Well Architected Framework
- Security, Compliance, and Cost Management

AI Jumpstart
Unlock the Power of AI for
Your Business



What is AI Jumpstart

AI Jumpstart is a 3-hour **investment** from Braintree into your organisation
Strategy to First AI Workload



AI Jumpstart
Unlock the Power of AI for
Your Business



AI Jumpstart Success



Bioforum is a Biometric Contract Research Organization (CRO) specializing in comprehensive clinical data solutions that drive the success of clinical trials. We provide expert-led services designed to optimize clinical research, ensure regulatory compliance, and accelerate the delivery of new therapies to patients.



Braintree
3,891 followers
[Visit website](#)
3w • 🌐

Still hesitant about adopting AI?

We don't blame you - AI journeys can be treacherous without an experienced, transparent partner to help you navigate the pitfalls.

This year, the Braintree team, led by [Chris Badenhorst](#), helped [Bioforum the Data Masters](#) begin their AI journey securely.

We can do the same for your business.

With AI Jumpstart by [Braintree](#), South African businesses can adopt AI safely and responsibly, with governance and compliance built in from the start.

Security and compliance are non-negotiable, and we'll make sure your deployment meets both.

Following our client-led event (catch the highlight reel below), we're continuing the AI conversation.

A huge "thank you" to the following individuals who made the event successful:
[Jacques Van der Merwe](#)
[Francois van Vuuren](#)
[Chris Badenhorst](#)
[Abu Omar \(CA\) SA](#)
[Gregor Dreyer](#)
[Sandile Mntambo](#)
[Lance Watson](#)

Ready to take the first step toward SECURE AI adoption?
👤 Message us with ALL your AI-related questions.
🔗 Learn more about AI jumpstart at the following link: <https://lnkd.in/dpavzJyK>

Bridge to Cloud by
Braintree
Measure twice, cut once